

PROVETRO IMPULS

LIFESTYLE  
„GREEN“

LIFESTYLE  
„GREEN“





## PALM LEAF

BULLSEYE TEKTA	Art. 7705448
Palm leaf mold	Art. 3522715
B-powder 1145	Art. 3541867
B-powder 1241	Art. 3541914
Shelf primer	Art. 3565050
Glass cutter	Art. 3128000
Plier	Art. 3211500
Jar sifter	Art. 3596000
Brush	Art. 3650000

## BANANA LEAF

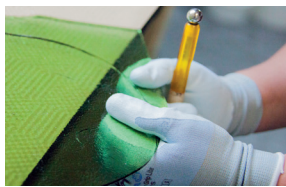
BULLSEYE 1217-30F	Art. 7724930
Banana leaf mold	Art. 3522713
B-powder 1207	Art. 3540491
B-powder 1141	Art. 3541866
Shelf primer	Art. 3565050
Glass cutter	Art. 3128000
Plier	Art. 3211500
Jar sifter	Art. 3596000
Brush	Art. 3650000

### STEP 1

Apply shelf primer to the molds and let them dry in your kiln with 200°C.

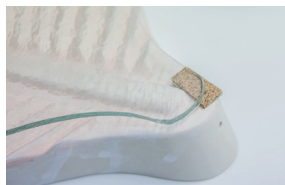
### STEP 2

Make a template of the fusing mold onto a piece of paper and cut it out. Then transfer the shape to your glass and cut the glass.



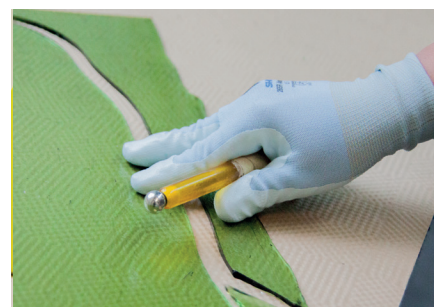
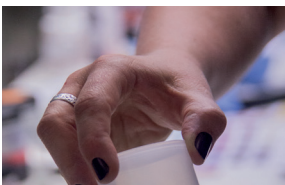
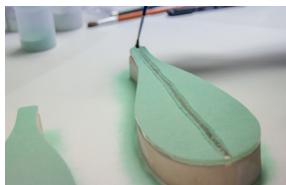
### STEP 3

Put the glass onto your mold and sketch the leaf structure with a pen (3650500). If the glass is moving a little bit, place a piece of cork at the front and back position.



### STEP 4

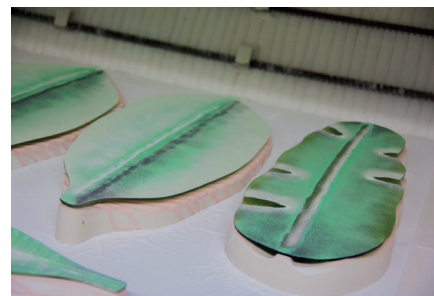
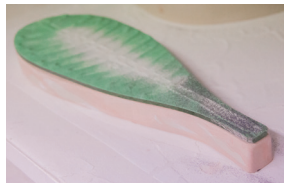
Now you apply the first layer of powder. When the glass is completely covered, take away the powder from the leaf structure with a brush. Now add the second colour into the free spaces. As last step you can apply a little bit of black and white powder for creating shadow and light. (Please wear the mask!)





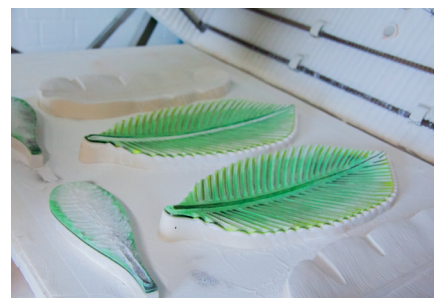
## STEP 5

If you are ready with the leaves place mold and glass carefully into the kiln.



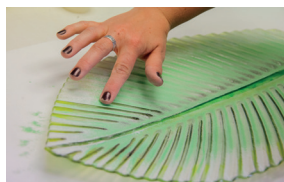
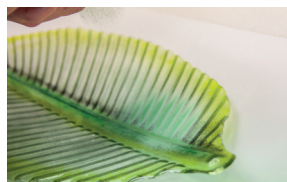
## FIRING CYCLE\*

- |    |        |   |       |
|----|--------|---|-------|
| 1. | 120min | - | 500°C |
| 2. | skip   | - | 725°C |
| 3. | 20min  | - | 725°C |
| 4. | skip   | - | 520°C |
| 5. | 120min | - | 520°C |
| 6. | 120min | - | 460°C |
| 7. | End    |   |       |



## STEP 6

Take the leaves out of the kiln. If a leaf is too bright, too yellow or not intensive enough, apply some more powder and fire it again.



\* All informations without guarantee / melting points must be adapted to the respective kiln.